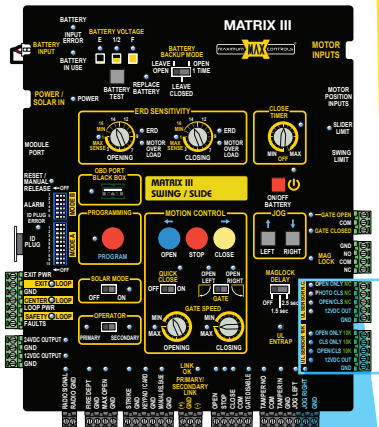


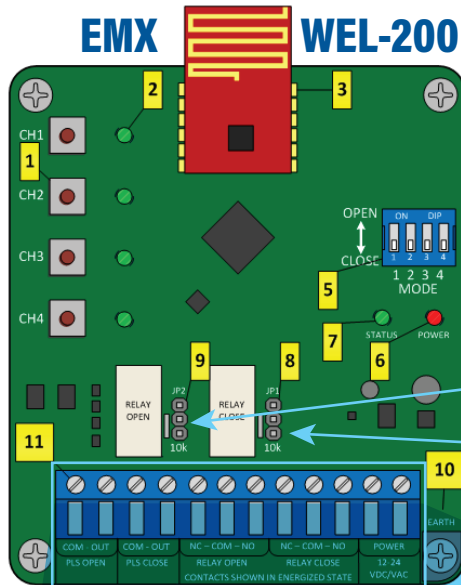
# EMX WEL-200 Wiring Guide FOR MAX PRO SERIES



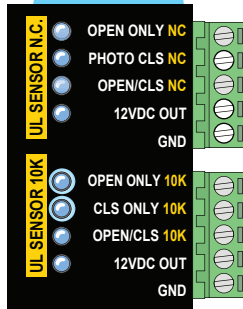
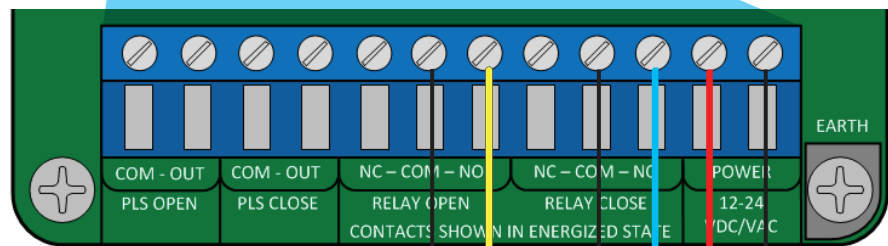
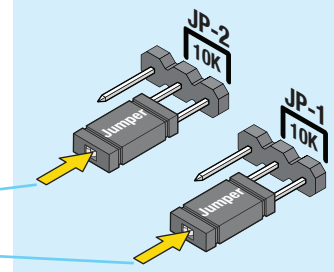
## 1 WIRE WEL-200R OPEN & CLOSE RELAYS TO MATRIX III 10K SENSOR INPUTS



## EMX WEL-200R



## 2 INSERT BOTH JUMPERS IN 10K POSITION



WIRE TO 'NO' OF RELAY OPEN

WIRE TO 'NO' OF RELAY CLOSE

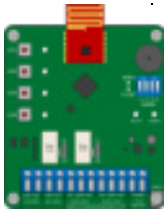
GND

Polarity does  
**NOT** matter  
for power

# CONNECTING RECEIVER (WEL-200R) TO TRANSMITTER (WEL-200T)



Connecting is a two step process. First, on the receiver, press and hold the channel assignment switch until the green status LED begins rapidly flashing, then release; this will clear any existing assignment for that particular channel. Hold down the connection switch on the transmitter. If it is not currently connected to a receiver, it will begin flashing rapidly until successfully connecting. Detailed instructions are given below.



**NOTE:** If there are no existing connections, the **receiver's** status LED will blink rapidly while it is finding a clean operating frequency (this can last a few seconds)  
After initialization, the system status LED will flash on/off once every 2 seconds

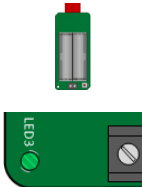
## STEPS

1



Set each channel to the desired OPEN/CLOSE direction function using the MODE dip switch  
**If a DIP switch is in the OPEN position, then that channel will trigger the OPEN Relay on receiver. Otherwise, it will trigger the CLOSE Relay.**

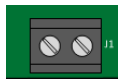
2



Install 2 AA Lithium batteries in the **WEL-200T (transmitter)**

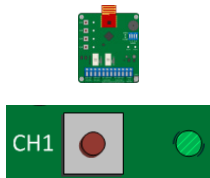
The green LED on the transmitter will quickly flash 2x every two seconds

3



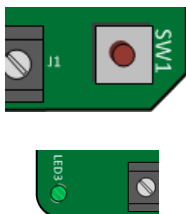
Install a properly terminated edge to the **transmitter** (8.2k or 10k termination)

4



On the **receiver**, hold down the desired channel assignment switch until all four channel LED's activate and the system status LED begins flashing rapidly, then release the switch.

5

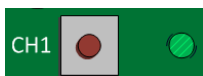
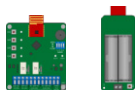


On the **transmitter**, hold down the connection switch (next to the terminal block)

The LED on the **transmitter** will begin flashing rapidly after ~4 seconds

Upon successful connection, the LED will flash once every two seconds  
If the **transmitter** fails to connect, it will return to its initial state, with the LED flashing twice every two seconds. If this occurs, repeat steps above.

## TESTING



Without activating the edge, observe the channel status LED, it should be OFF.

When the edge is activated, the **receiver** channel status LED will turn on and the corresponding OPEN/CLOSE direction output will activate. The **transmitter** status LED will blink once every *second* when the edge is activated.

If the channel does not exhibit this behavior, double check the edge wiring/termination and transmitter batteries.