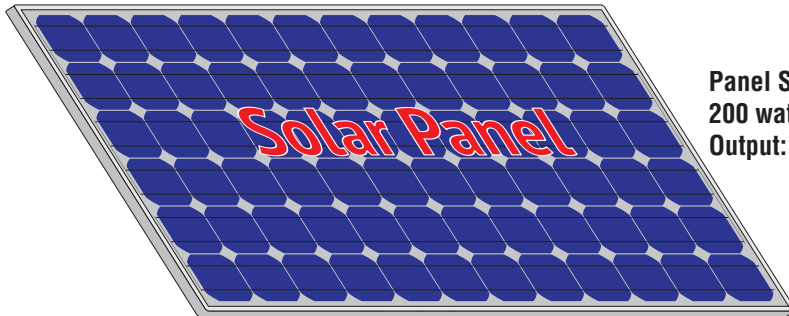


Solar Application Guide/Wiring



For MAX Megatron Swing operators: Use 35 Amp/Hr batteries minimum

For MAX 1500/2200 Slide operators: Use 50 Amp/Hr batteries minimum



Panel Specs:
200 watt panel
Output: 36 V (maximum) - Open Circuit

NOTE: Cover solar panel from sunlight **BEFORE** wiring to prevent a shock from occurring.

NOTE: For more information about solar panel wiring, see **your chosen** panel's manual.

Suggested Solar Regulators:

Morning Star SunSaver
OR
Morning Star SunSaver MPPT

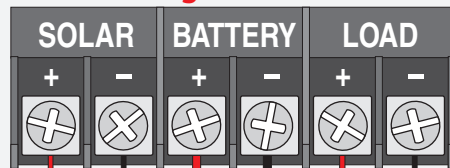
NOTE: For more information about solar regulator wiring, see **your chosen** regulator's manual.

Enclosure

Install components in water resistant well ventilated enclosure.

Properly Ground Enclosure.

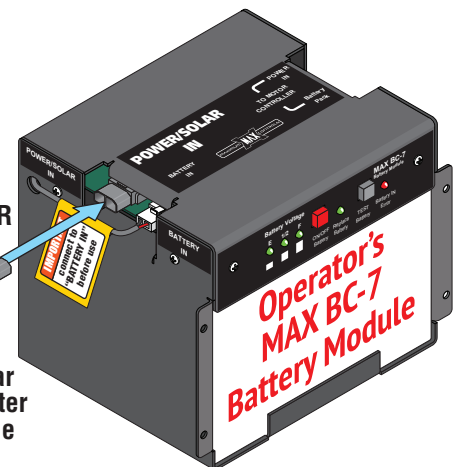
Solar Regulator Terminal



Regulator Specs:
24 V MAX - 20 Amp

Connect to
POWER/SOLAR IN

Solar
Adapter
cable



Pos + Red
Polarity Matters!
Neg - Black



24 V Batteries

Use AGM battery type.

Use insulated tools and avoid placing metal objects near the batteries.

Megatron
Battery Location

MAX 1500/2200
Battery Location